

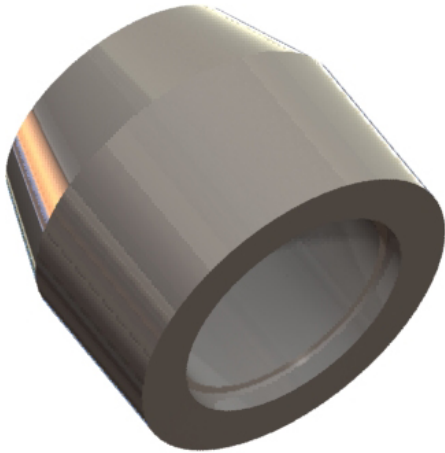
TECHNICAL DATA SHEET

DESCRIPTION

The D106 consists of a DB end anchor with a machined chamfer on one end providing the surface area required to fillet weld coupler.

APPLICATION

The D106 weldable coupler provides a convenient means of connecting reinforcing bars to structural steel plates or sections. Shorter than the standard coupler, it is threaded at one end. The other end is welded directly to the steel.



FEATURES

- Compact design ensures suitability for use in confined situations or where loss of cover must be minimized
- Reduces engineering time
- Reduces rebar congestion
- Provides Type 2 splicing connection and simplifies load paths
- Complies with ACI, Caltrans, IBC, and Ministries of Transportation for Ontario and Quebec

TECHNICAL DATA

	Bar Size		Thickness (in.)	Outer Diameter (in.)	20° Chamfer (in.)
	US (MM)	CN (M)			
#4	[13]	[10]	1.125	1.3	0.25
#5	[16]	[15]	1.25	1.3	0.25
#6	[19]	[20]	1.375	1.3	0.38
#7	[22]	--	1.5	1.5	0.38
#8	[25]	[25]	1.625	1.6	0.5
#9	[29]	[30]	1.75	1.9	0.56
#10	[32]	--	1.9375	2.3	0.63
#11	[36]	[35]	2.0625	2.4	0.75

INSTALLATION

1. Must be welded to structural steel by certified welder

RELATED PRODUCTS

- D101
- D101A
- D102A
- D103A
- D104A
- D108A
- D158

HOW TO ORDER

- The D106 DB Weldable Coupler is a Made to Order Product.
- Please Specify: (1) quantity, (2) name, (3) rebar size.
- Example: 500 pcs., D106 DB Weldable Coupler, #6

MANUFACTURER

Dayton Superior Corporation
 1125 Byers Road
 Miamisburg, OH 45342
 Customer Service: 888-977-9600
 Technical Services: 877-266-7732
 Website: www.daytonsuperior.com

WARRANTY (ACCESSORIES)

Limited Warranty. Dayton warrants, for a period of 60 days from the date of shipment (three years from the date of shipment in the case of formwork, excluding any consumable Products included with such formwork), that Products and any associated application drawings and engineering services provided by Dayton ("Ancillary Services") will be free from defects in material and workmanship and, in the case of custom designed formwork, that the formwork will meet the specifications set forth in the design drawings approved by Dayton and Customer. Any claim under this warranty must be made in writing within such warranty period. If any Product and/or Ancillary Service covered by a timely claim are found to be defective, Dayton will, within a reasonable time, make any necessary repairs or corrections or, at Dayton's option, replace the Product. Unless pre-authorized by Dayton in writing, Dayton will not accept any charges for correcting defects or accept the return of any Product. This warranty will not apply to any Products that have been subjected to misuse, neglect, storage damage, misapplication, accident or any other damage caused by any person other than Dayton, or that have not been maintained in accordance with Dayton's specifications. THIS LIMITED WARRANTY IS IN LIEU OF ALL OTHER WARRANTIES AS TO THE PRODUCTS AND ANCILLARY SERVICES. DAYTON MAKES NO OTHER WARRANTIES OR GUARANTEES, EXPRESS OR IMPLIED, INCLUDING ANY WARRANTY OF MERCHANTABILITY, FITNESS FOR A PARTICULAR PURPOSE OR OTHERWISE. THE REMEDIES SET FORTH IN THIS SECTION ARE CUSTOMER'S EXCLUSIVE REMEDY FOR BREACH OF WARRANTY.